



SPF America, LLC

SOUTHERN PRECISION FABRICATION

Empowering our customers through precision fabricated products.

Hyperlinks

About us

[Experience](#) — [Company History](#) — [Locations](#) — [Vertical Integration](#) — [ISO Certification](#)

Equipment & Services

[Materials](#) — [Engineering](#) — [Equipment](#)

Vertically Integrated Processes

[Overview](#) — [Bending](#) — [Machining](#) — [Plating](#) — [Finishing](#) — [Assembly](#) — [Kitting & Delivery](#)

Experience

45+ years in business.

Industries Served

- Industrial Battery
- Energy Storage
- Telecommunication
- Power Generation
- UPS
- Data Center
- Power Transmision
- EV Industrial
- EV Charging
- Backup Power
- Power Distribution
- Tier Two Government



Core Strengths

- Customer Service
- Vertical Integration
- Continuous Improvement
- Market responsiveness
- Flexibility



Company History

1977

- Mid-West Enamellers Inc. Founded by Basil C. Brock.
- Started as paint shop, morphed into fabrication facility.

1987

- Acquired B&W Electro-plating facility
- Copper fabrication initiated late 80s

1997

- Copperfab founded

2012

- SPF America founded. (Merger between Mid-West Enamellers & Copperfab)
- Opened facility in Matamoros, Mexico

2021

- Initiated facility in Monterrey area (Santa Catarina)



Locations

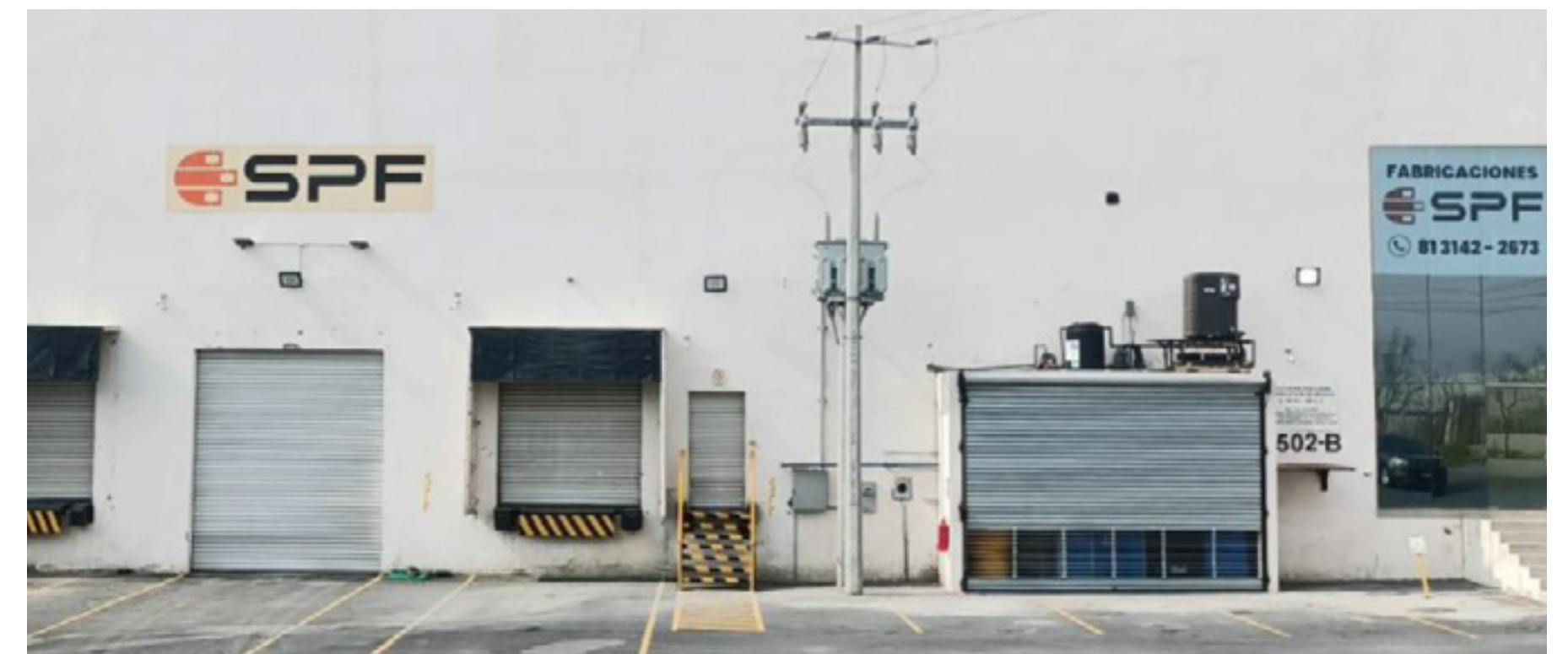
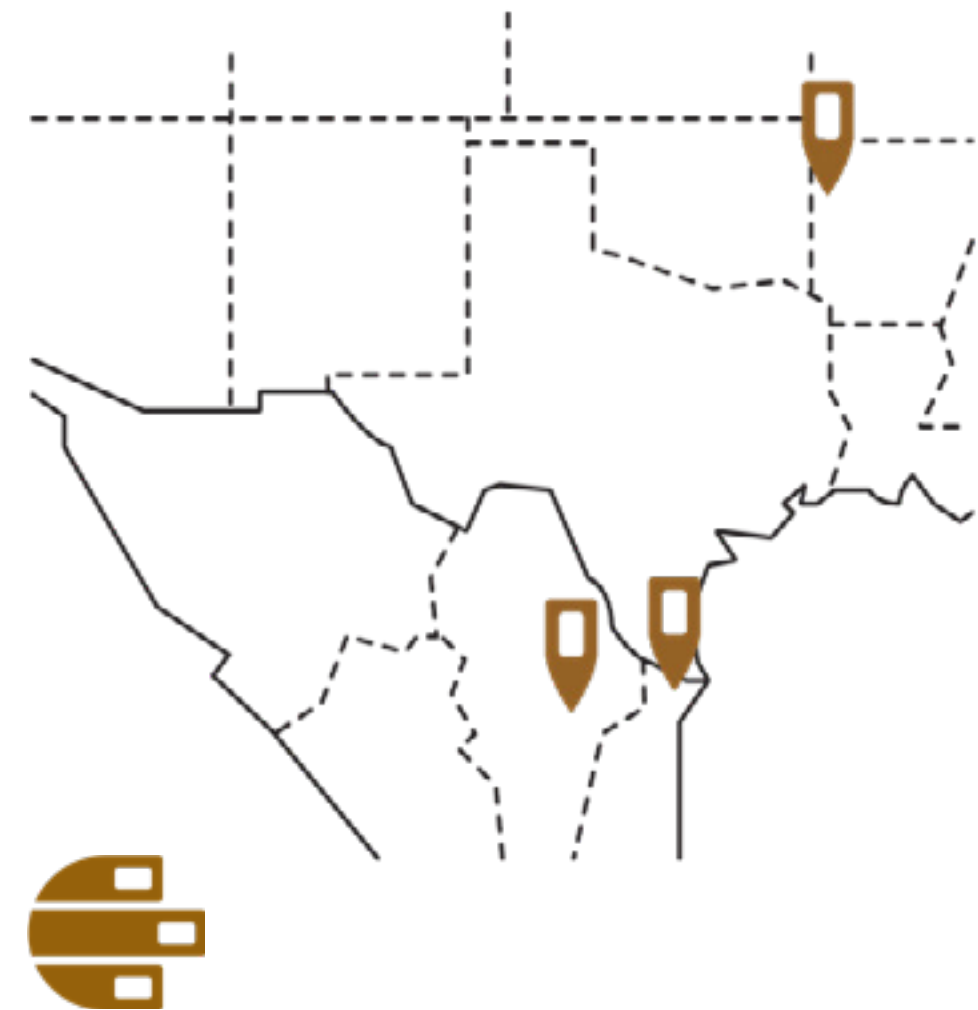
USMCA Compliant

SPF America

Fort Smith, AR

SPF de Mexico

Santa Catarina, Nuevo León
Matamoros, Tamaulipas



Quality Focused

Custom FAIs on request

Certifications

- ISO 9001:2015
- RoHS on certain parts





CERTIFICATE OF REGISTRATION

This is to certify that the management system of:

SPF America

Main Site: 5510 S. 66th Street, Fort Smith, Arkansas, 72903, United States

Additional Site: 5510 S. 66th Street, Fort Smith, Arkansas, 72903, United States

See appendix for additional sites and additional site scopes

has been registered by Intertek as conforming to the requirements of:

ISO 9001:2015

The management system is applicable to:

The manufacture, fabrication and distribution of copper busbars, battery connectors, fabricated metal parts, non-metallic fabricated parts, painting/powder coating, electroplating of copper parts, ink-stamping, and screening performed at SPF Companies locations.

Certificate Number:
CERT-0115683

Initial Certification Date:
25 March 2009

Date of Certification Decision:
22 March 2024

Issuing Date:
22 March 2024

Valid Until:
20 March 2027



intertek



Calin Moldovean
President, Business Assurance

Intertek Testing Services NA,
Inc. dba Intertek,
4700 Broadmoor SE Suite 200 Kentwood,
Michigan 49517, United States



In the issuance of this certificate, Intertek assumes no liability to any party other than to the Client, and then only in accordance with the agreed upon Certification Agreement. This certificate's validity is subject to the organization maintaining their system in accordance with Intertek's requirements for systems certification. Validity may be confirmed via email at certificate.validation@intertek.com or by scanning the code to the right with a smartphone. The certificate remains the property of Intertek, to whom it must be returned upon request.

Page 1 of 3





Equipment & Services

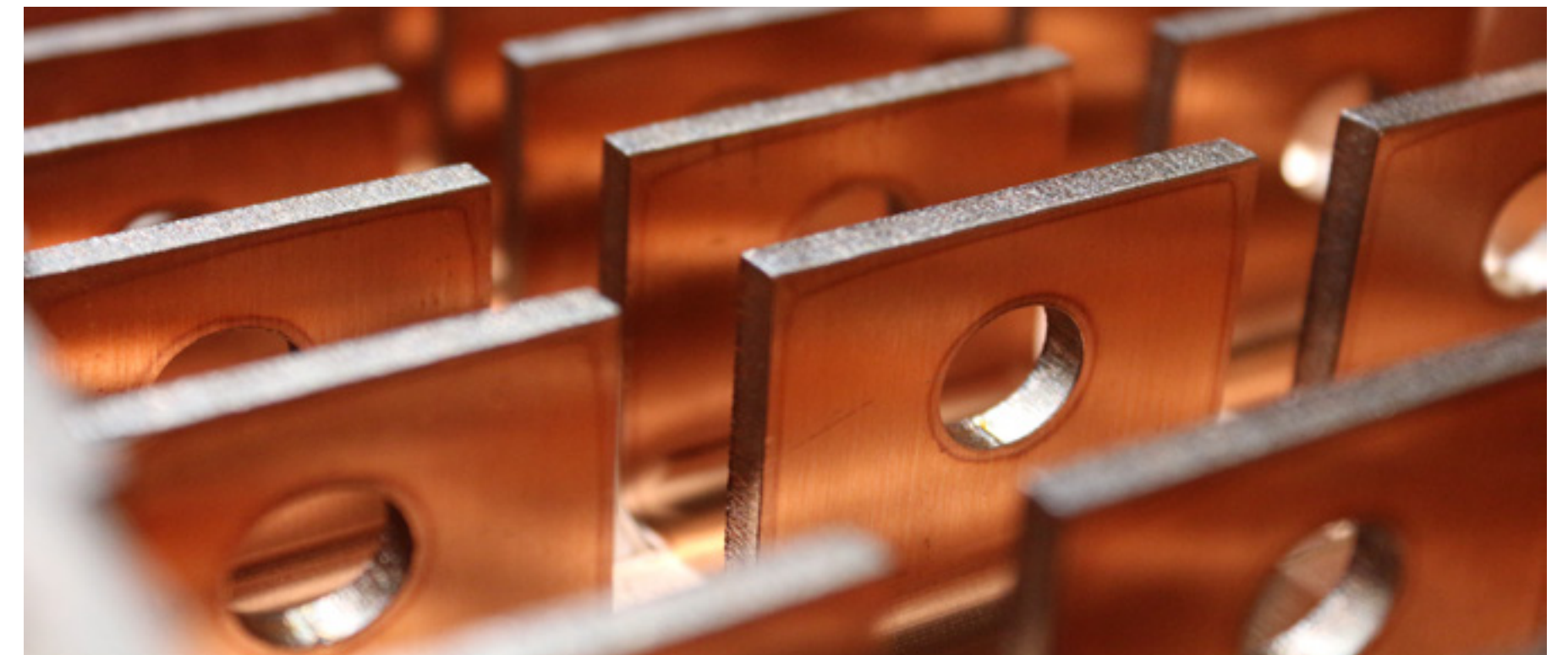
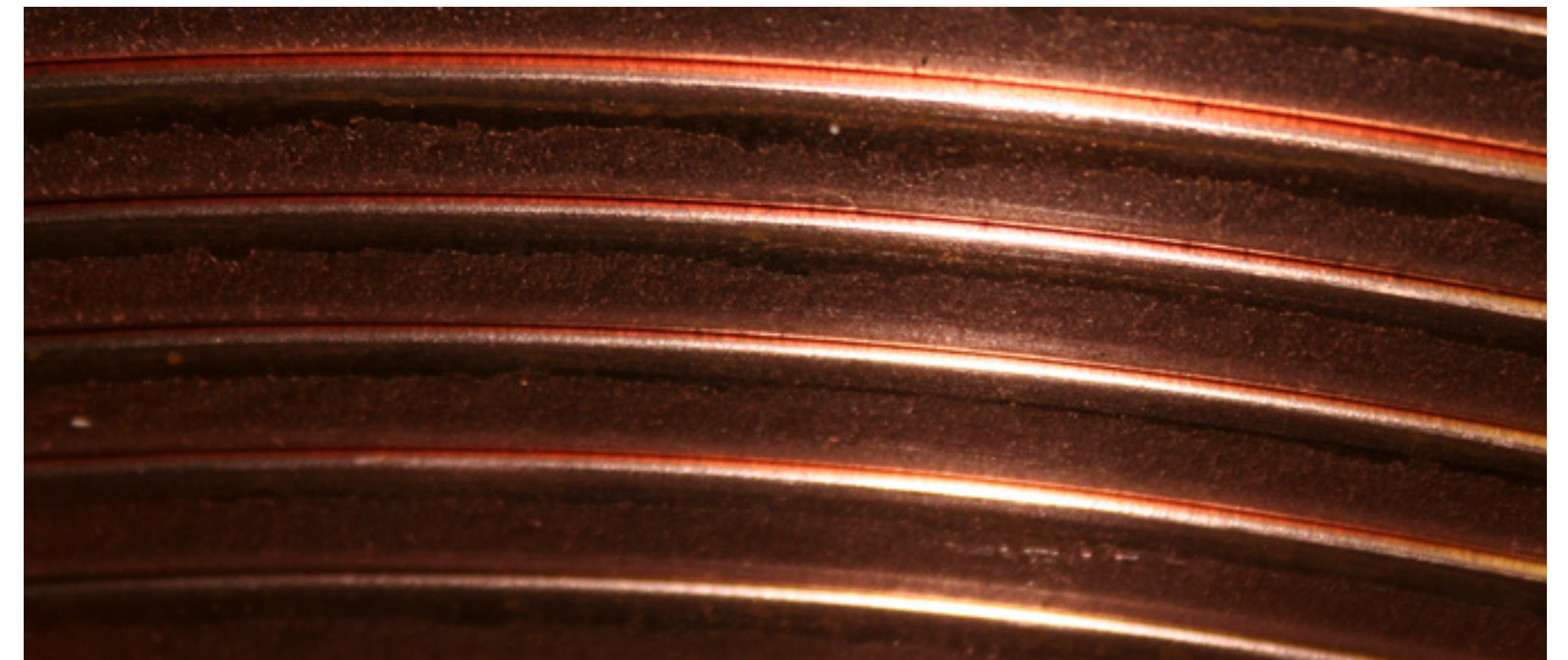
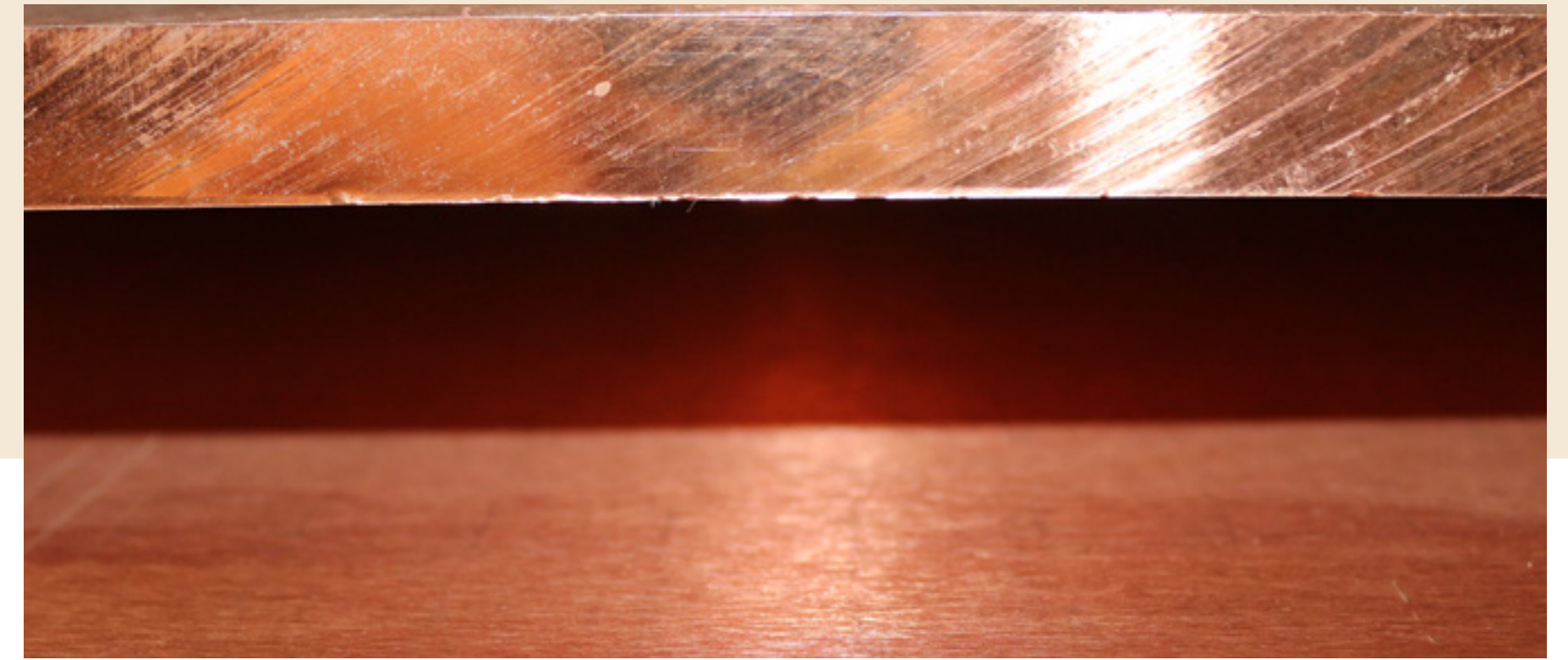
CAPABILITY OVERVIEW

Materials

Based on Comex Pricing

Pre-coated or post-finished

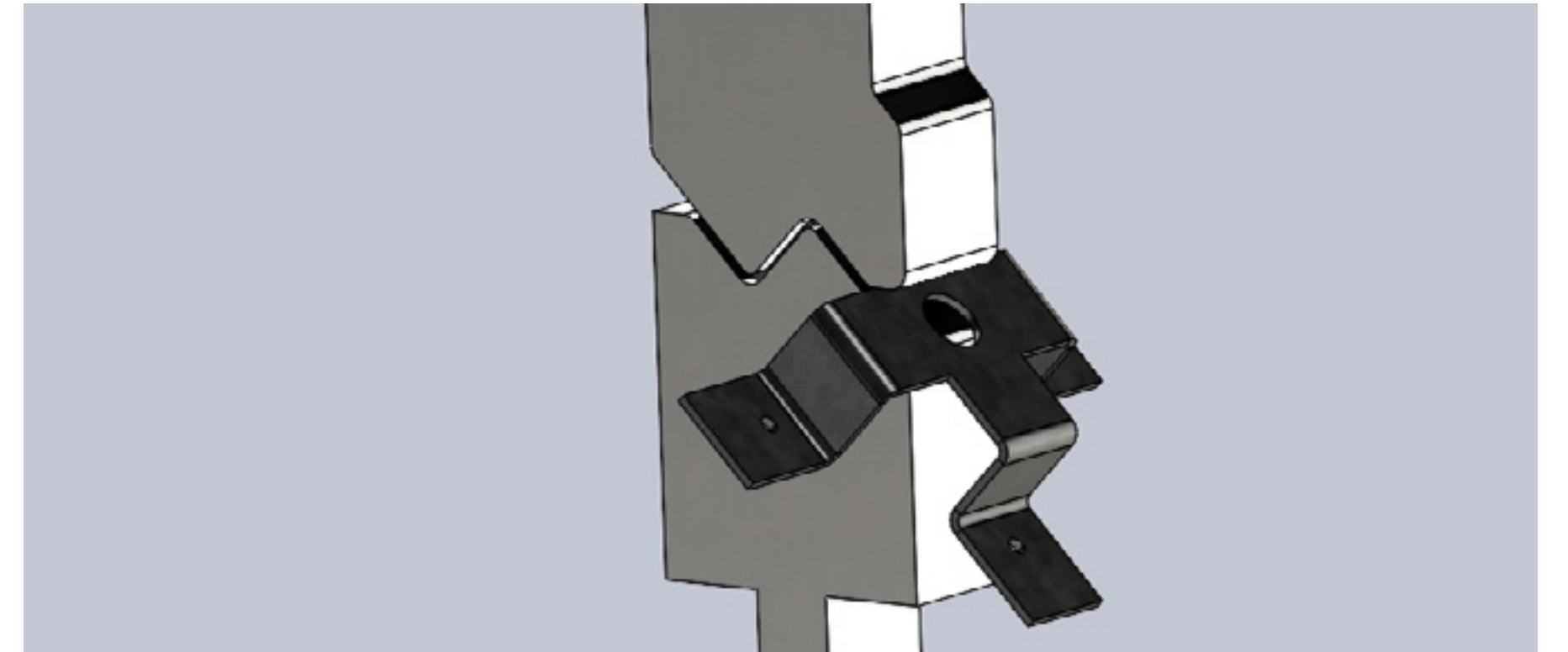
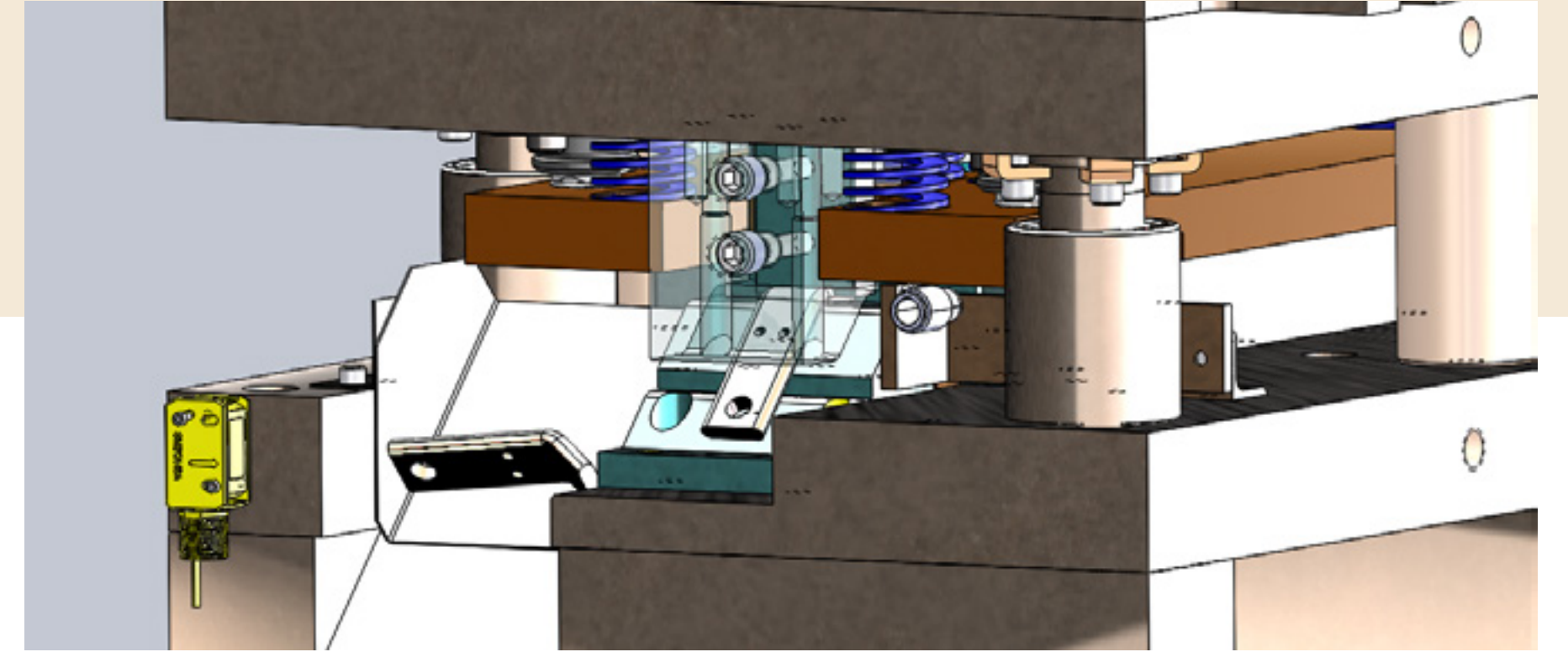
- Copper
- SST, mild, and galvanized steel
- Aluminum
- GPO-3
- Formex
- Lexan



Engineering

Current service offering

- Fast quoting
- Prototyping
- DFM
- Tool Development



Equipment

65,000 SQ. FT.

As we continually upgrade our equipment, we expand our capabilities and offer cutting edge processes.

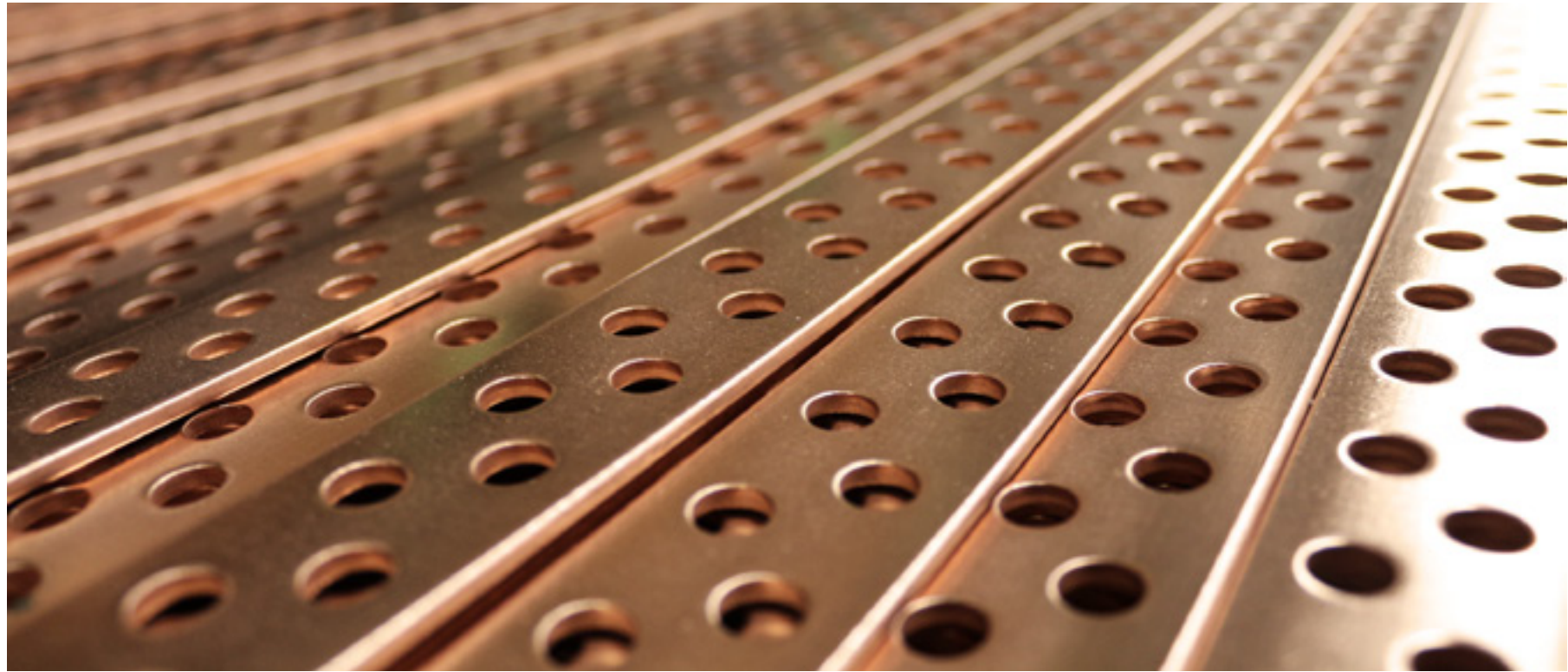
Current Equipment Includes

- Multiple busbar fabricating machines
- 9KW fiber laser with automation
- Coil fed servo stamping presses (up to 220 ton)
- CNC router
- Multiple CNC turret presses
- Multiple CNC Machining centers
- EMK presses
- Press brakes



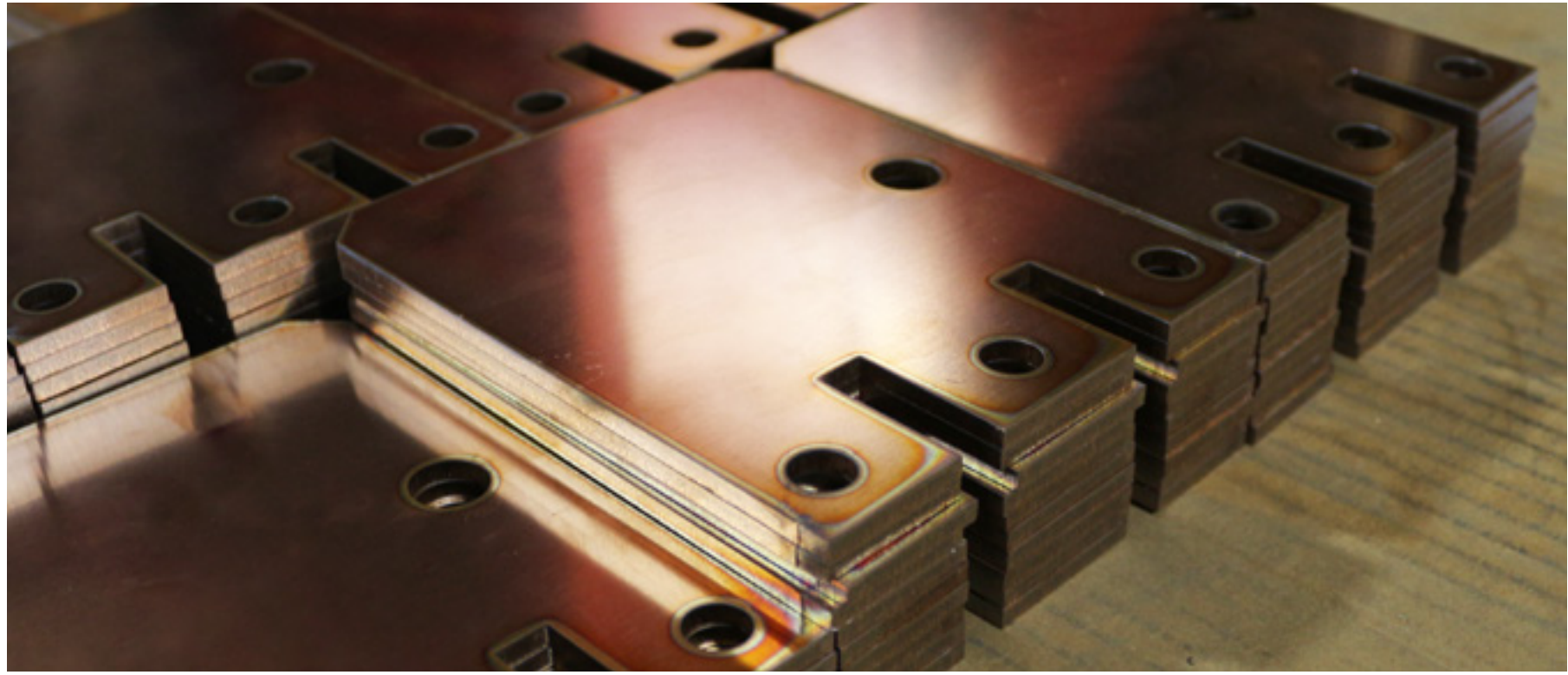
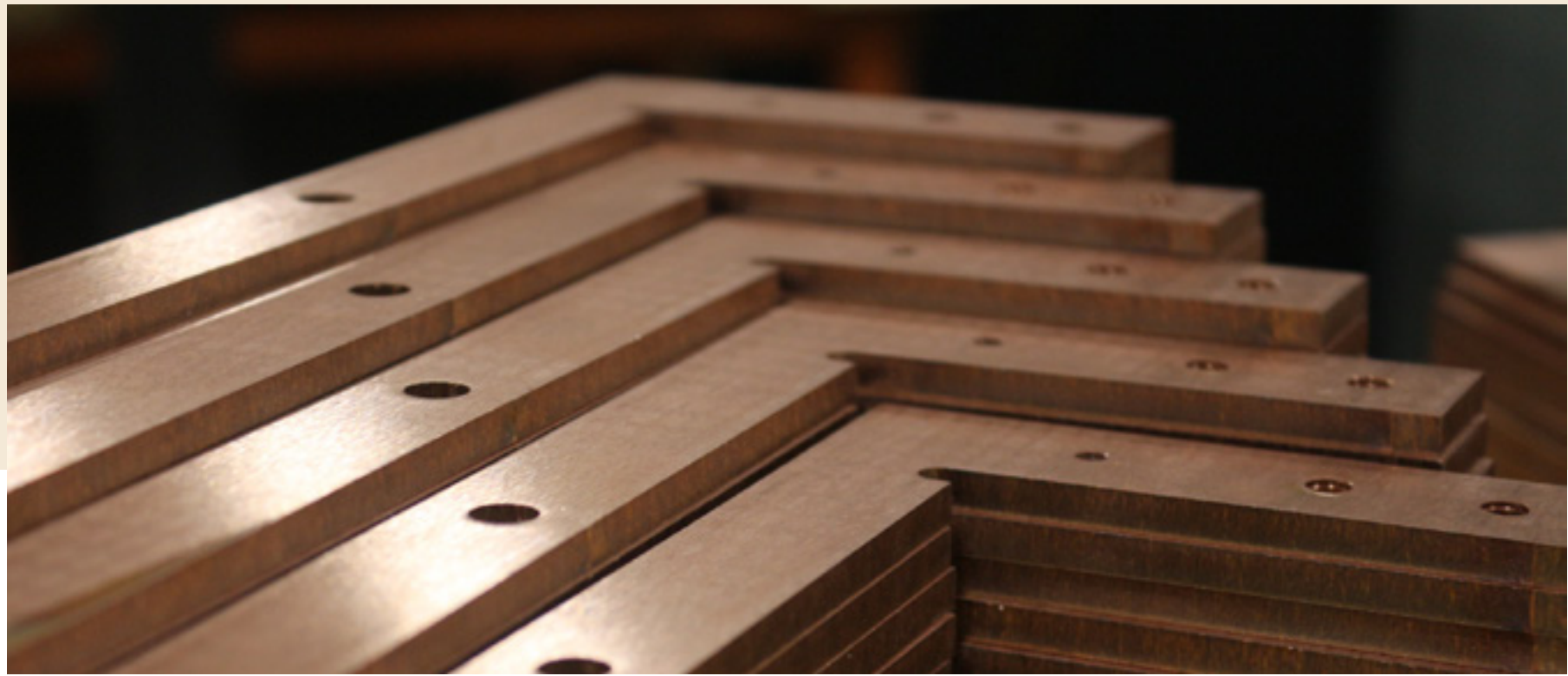
Equipment

Multiple Busbar Machines



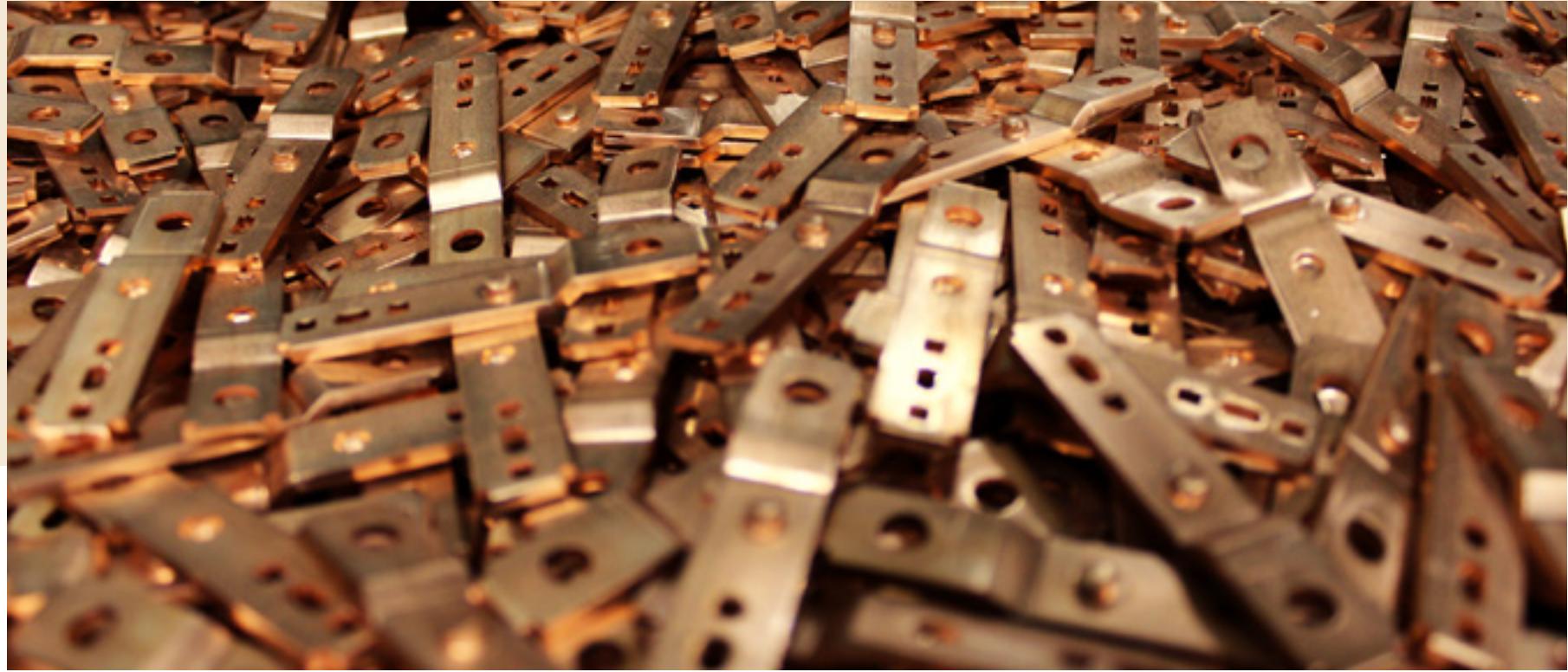
Equipment

Automated 9KW Fiber Laser



Equipment

Coil Fed Servo Stamping Presses





Vertically integrated processes.

FABRICATION, FINISHING, & ASSEMBLY

Processes

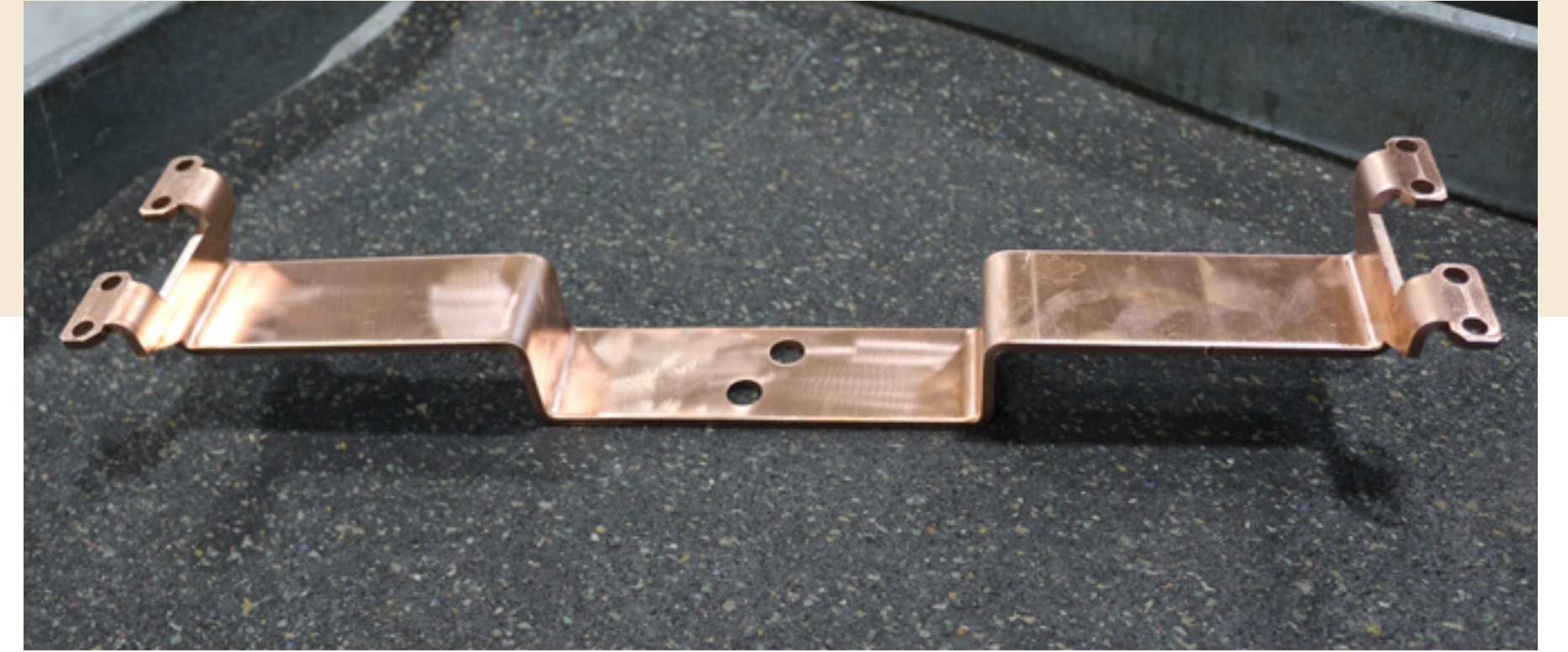
Current processes include:

- Prototyping
- Tapping
- Riveting
- Robotic Welding
- Copper Brazing & Soldering
- Hardware insertion (PEM Catalogue)
- Assembly (welding, hardware, electrical)
- In-house wood shop for kitting
- In-house tooling development



Bending

- In-house Custom Form Dies
- Complex bends (6+)
- Radial bending
- 5 brakes
 - 2 CNC



Machining

- Tapping
- Several CNC vertical mills (some automated)
- Gantry router
- 5 Axis lathe



Plating

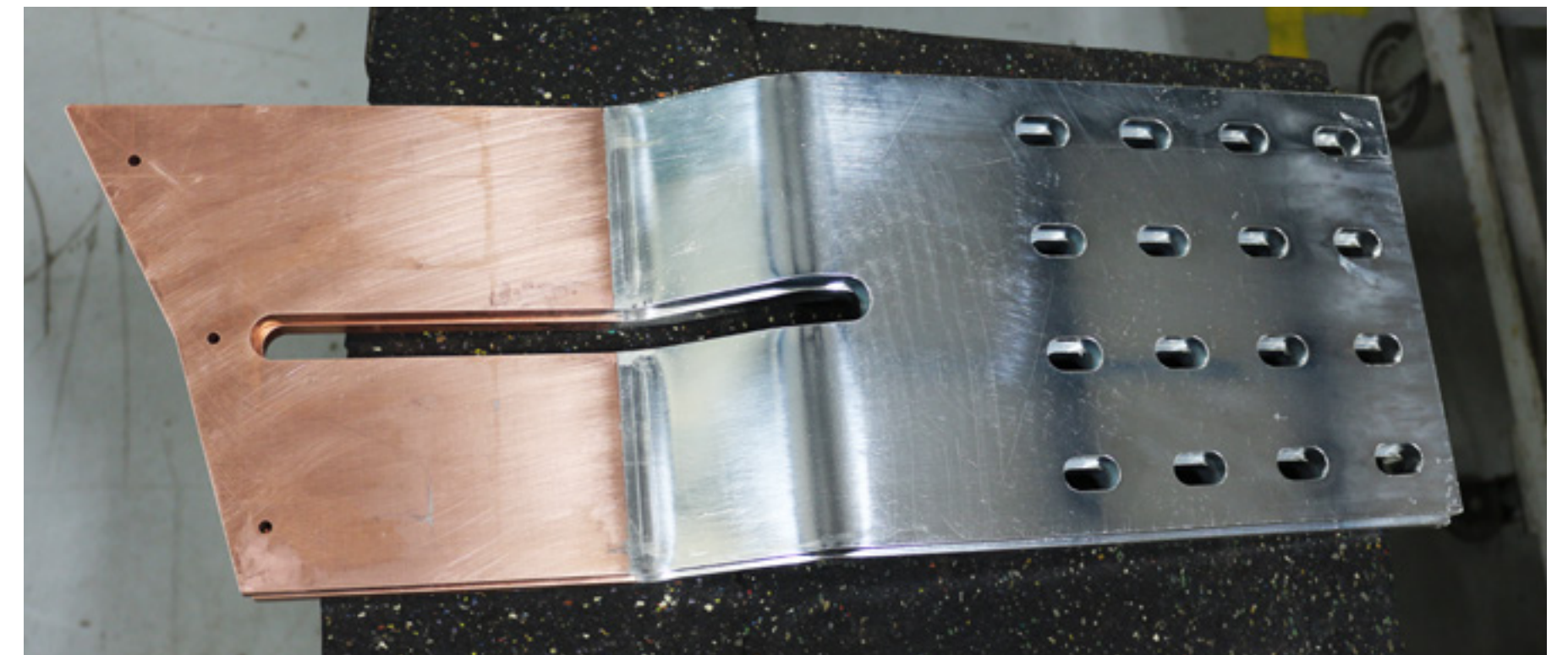
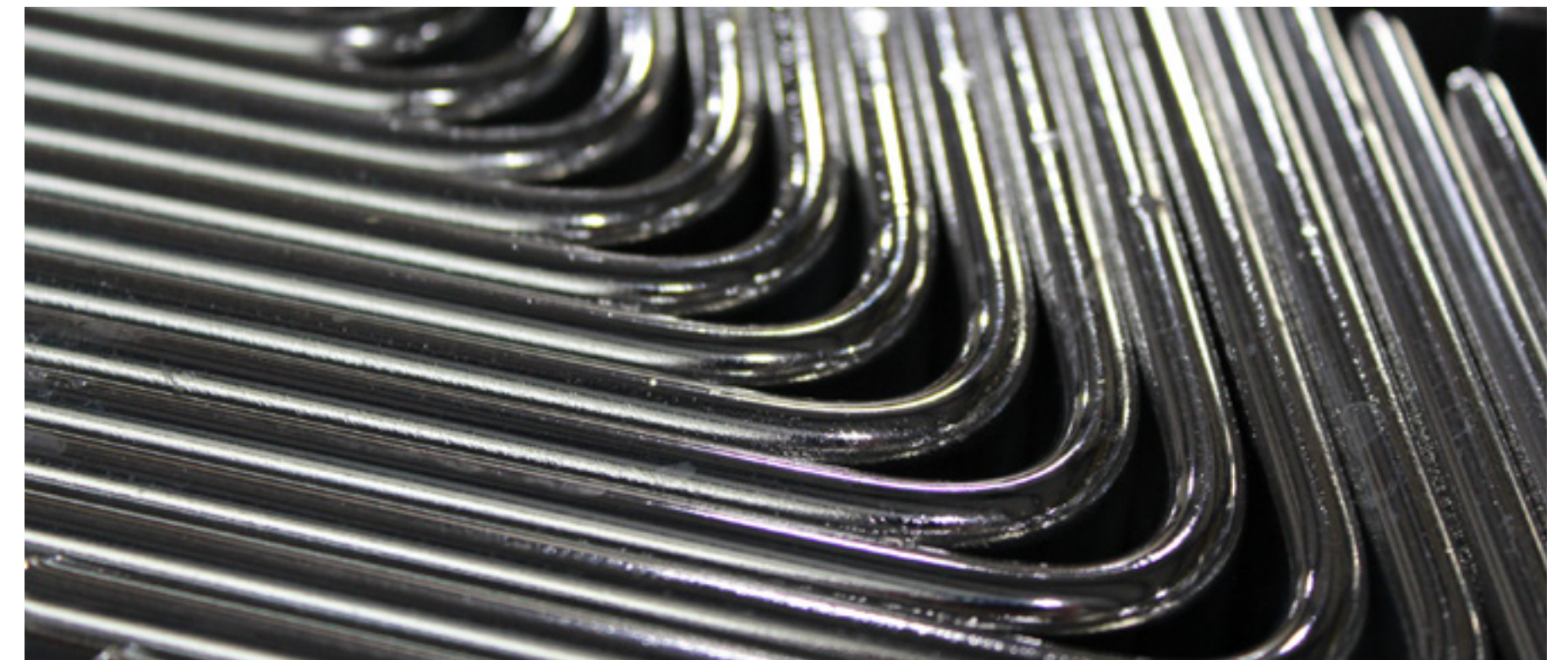
In-House Production

In House Plating

- Nickel
- Bright & Matte Tin (90"+ capability)
- Tin/Lead

Strategic Partners

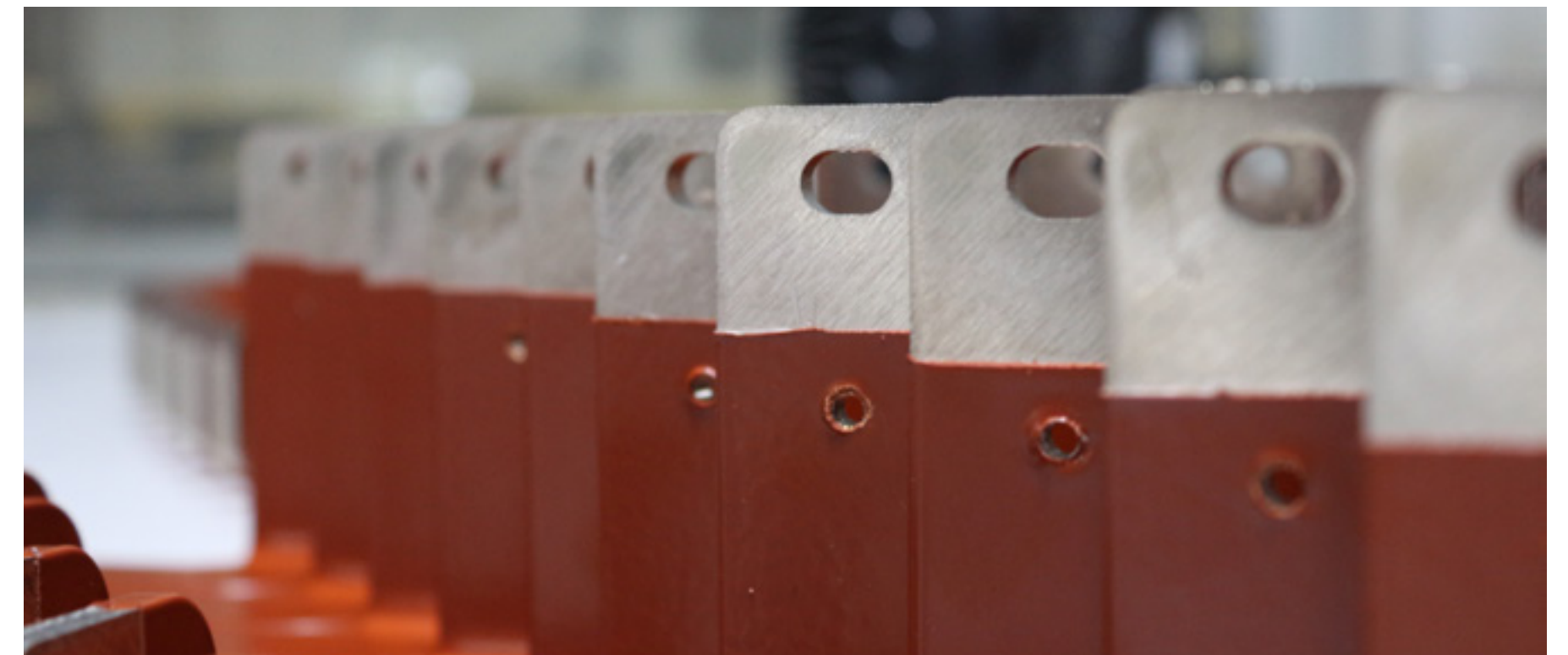
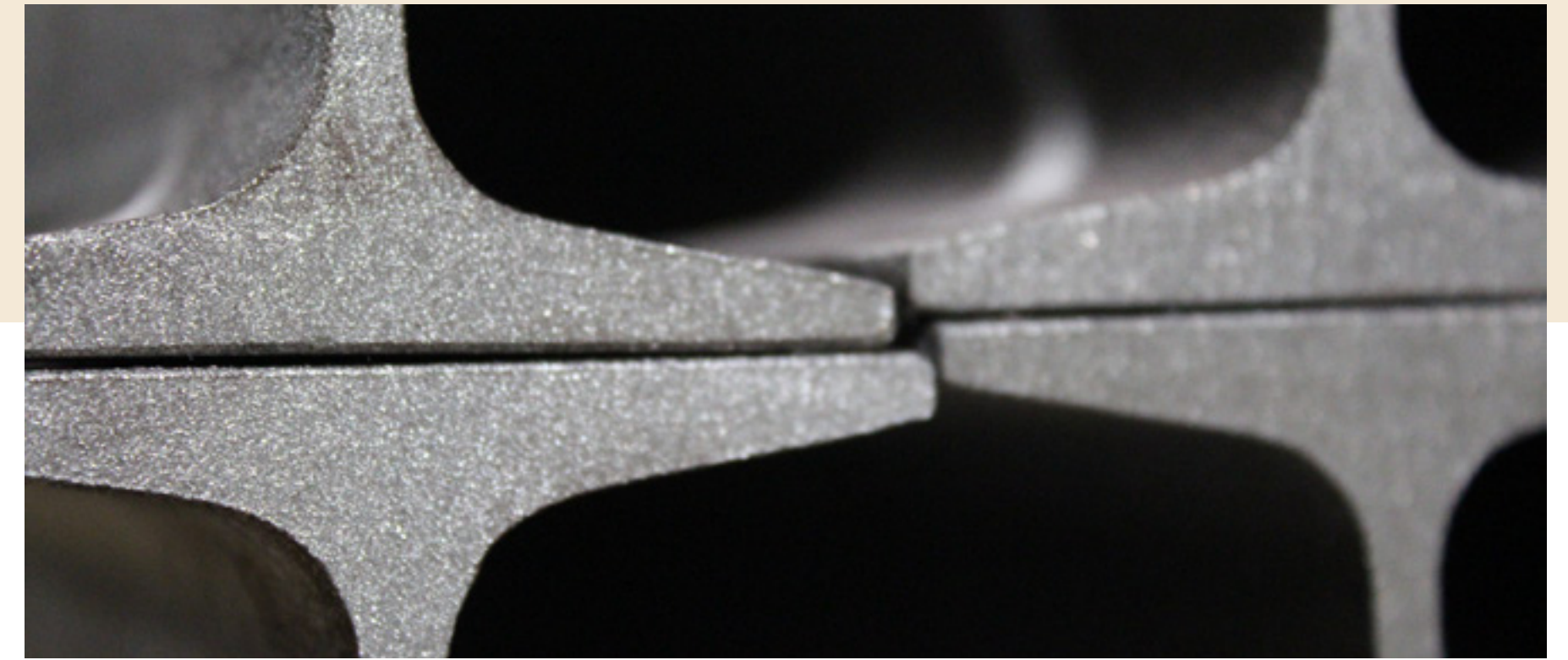
- Silver
- Electroless Nickel
- Zinc
- Tin on Aluminum



Finishing

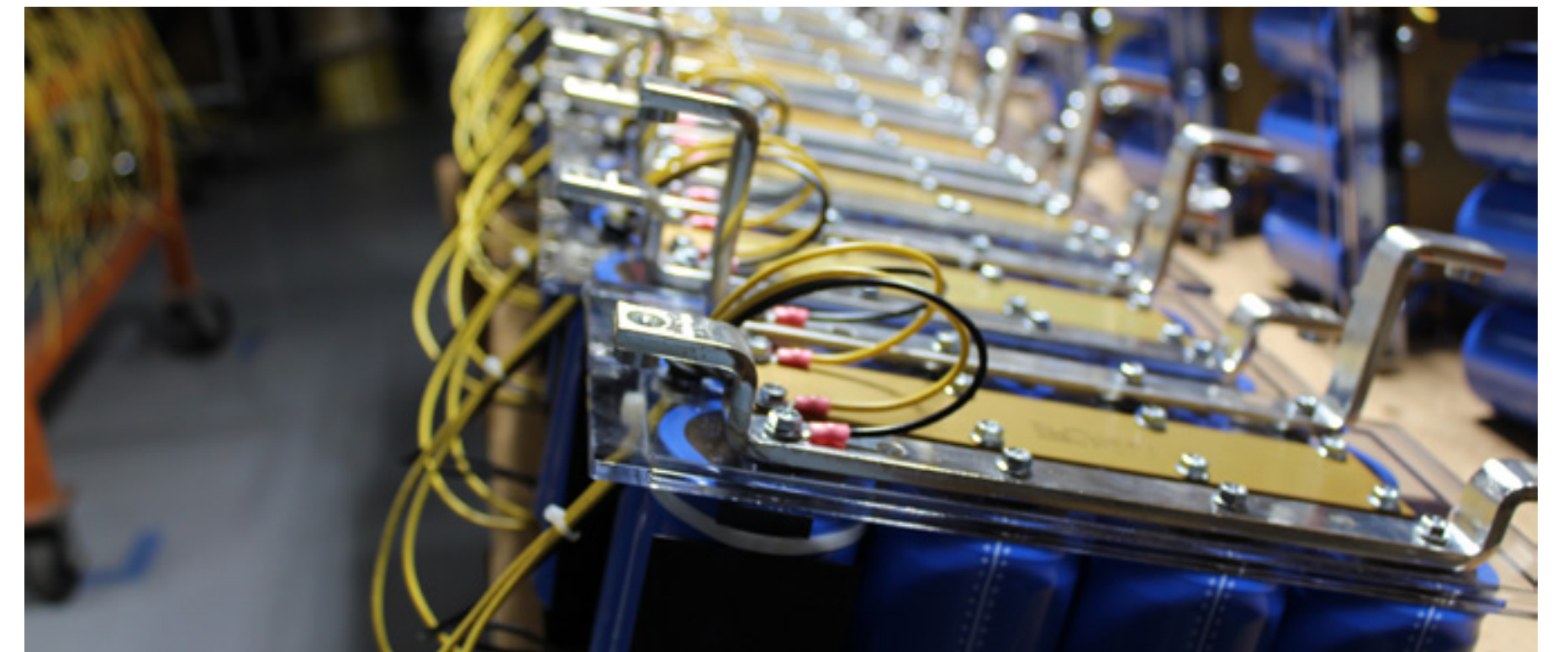
Post-finishing processes

- Deburring
- Grinding
- Sand-blasting
- Heat shrink insulation
- Epoxy Insulating Powder Coating
- Printing & indentation (serialized parts)



Assembly

- General & hardware assemblies
- Hardware from PEM catalogue.
- Welding
- Electrical



Kitting & Delivery

Freight & Air Shipping

- +95% average OTD
- In-House Wood Shop
- Tight packing to ensure product safety
 - Prevents product damage





Get quoted today.

US

(479) 646 - 7815

MX

(868) 826 - 0272

US ≥ MX

(956) 267 - 2074



Website

[spfamerica.com /quote](https://spfamerica.com/quote)

General Quoting Contact

rfq@spfamerica.com

