

# IMA EV-TECH

## Technologies for e-mobility

**IMA**  **EV-TECH**  
Technologies for E-Mobility

P O W E R E D   B Y

**IMA**  **AUTOMATION**





**IMA** EV-TECH

POWERED BY

**IMA** AUTOMATION





IMA EV-TECH is the business unit of IMA AUTOMATION, entirely committed to electric vehicle (EV) assembly technologies.

As a division of the IMA Group and a market leader in the design and manufacture of advanced technological lines for handling and assembling parts, IMA AUTOMATION created IMA EV-TECH to strengthen its presence in the rapidly evolving electric vehicle sector.



**+300  
EMPLOYEES**



**5 WORLDWIDE  
LOCATIONS**



**+60 YEARS  
OF EXPERIENCE**



**+600  
PATENTS**



This unit specializes in the development of complete lines and assembly technologies for EV solutions such as battery cells (cylindrical and prismatic), fuel cells, e-axes, e-motors, stators and rotors.

IMA EV-TECH stands out for its ability to meet the specific needs of automotive manufacturers and suppliers.

The unit provides cutting-edge assembly platforms, both standardized and fully customized, that are designed to meet the most demanding industry standards.

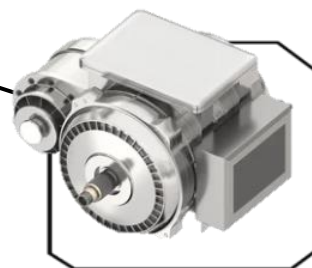
In addition to assembly solutions, IMA EV-TECH delivers robotic systems, digital platforms, and virtual resources, enabling its partners to achieve optimal efficiency and innovation in production processes.





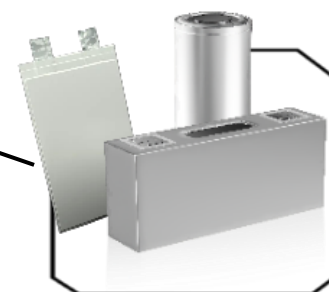
## • E-MOTORS ASSEMBLY

- Hairpin stator
- Coil winding stator
- Single pole stator
- Permanent magnet rotor
- Winding rotor



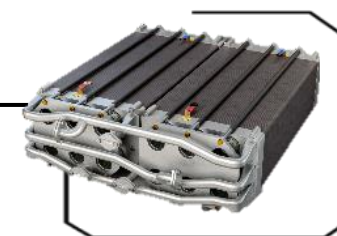
## • E-AXLE ASSEMBLY

- E-Motors Assembly
- Transmission Assembly



## • BATTERY

- Cylindrical & Prismatic Cell Production
- Modules & Pack Assembly



## • FUEL CELL

- MEA (MEFA) Production
- PEM Testing, Stacking & Assembly



# Battery Manufacturing Process

**IMA** EV-TECH

POWERED BY

**IMA** AUTOMATION



# Battery Manufacturing Process

## Cell Assembly Equipment



STACKING/  
WINDING



CELL  
PACKAGING



ELECTROLYTE  
INJECTION

## Activation and Testing Equipment



TESTING and  
GRAADING



Solutions offered:

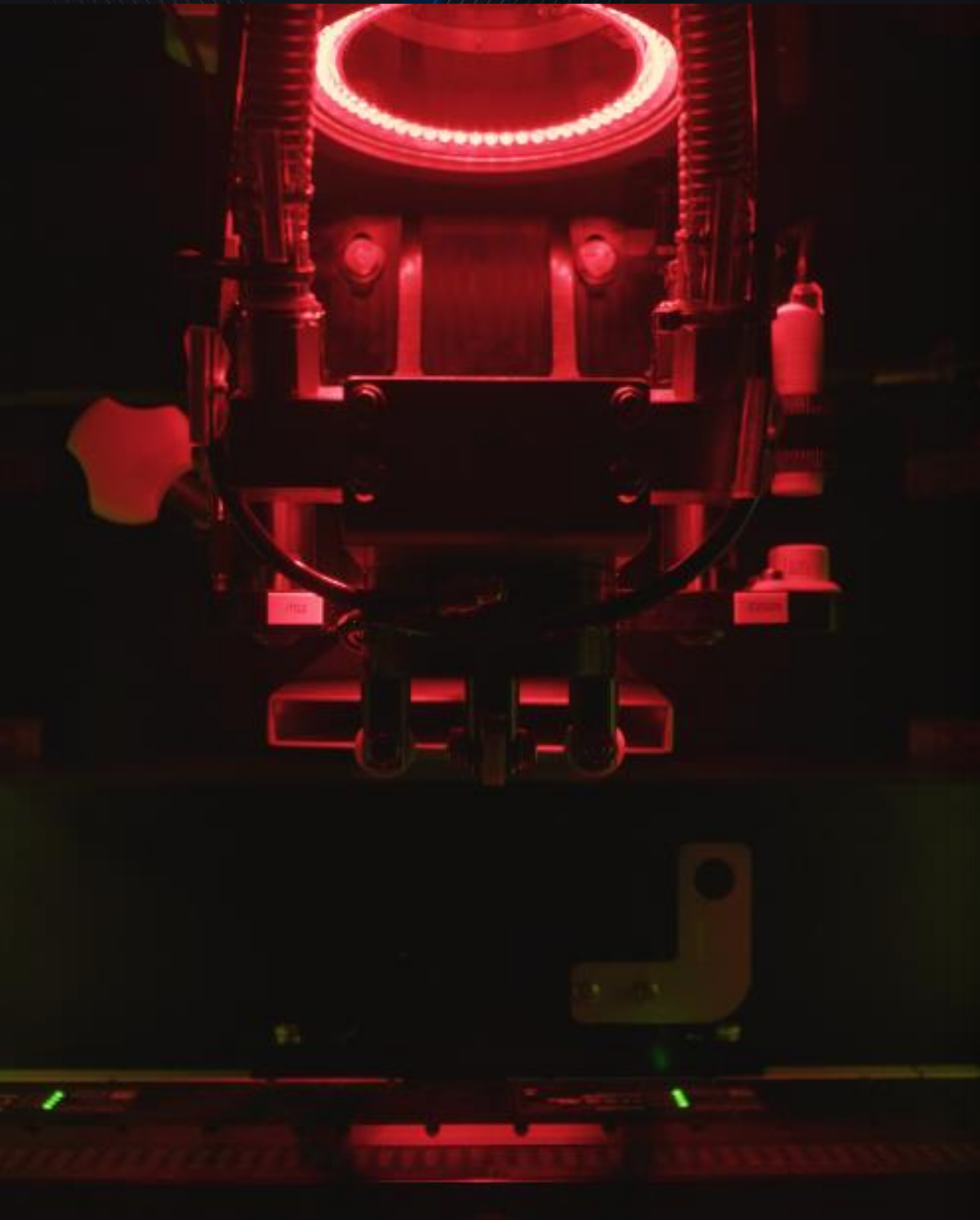
- Proof of Concept engineering
- Pilot scale equipment
- High volume production lines

## GAME-CHANGING APPROACH TROUGH INNOVATIVE CONCEPTS

- Standard and bespoke systems that combine hybrid, continuous and index-motion processes.
- Integration of multiple processes into a modular platform.
- Minimal product manipulation throughout the manufacturing flow.
- Up to 50% reduction in footprint requirements for clean and dry rooms.
- High reduction in cost of ownership.

**UNMATCHED YIELD LEVELS  
MINIMAL MATERIAL WASTAGE  
REDUCTION IN FOOTPRINTS**





## EXPERTISE IN KEY PROCESSES

- **Cleanliness / laminar flow control:** Derived from our extensive experience in regulated industries such as pharmaceuticals, particularly injectable drug manufacturing.
- **Laser Welding and Notching:** Advanced integration features developed through patented technologies.
- **Inspection / Vision Systems:** High-precision quality control, capable of detecting potential defects down to 30 microns.
- **Electrolyte Filling:** Consistent filling, with accuracy of  $\pm 1\%$

**imaautomation.com**



IMA S.p.A. – **EV-TECH**

automation@ima.it

FOLLOW IMA AUTOMATION

